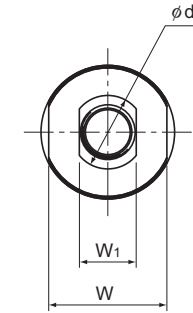
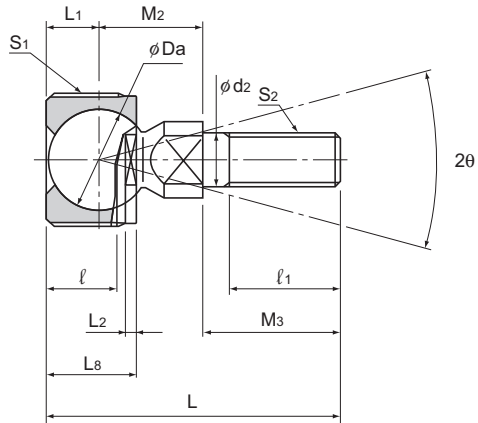


Model TBS



Unit: mm

Model No.	Outer dimensions		Holder dimensions					Shaft diameter d_2 h9	Threaded S_2 JIS Class 2	Ball shank dimensions					Ball diameter D_a	Permissible tilt angles $2\theta^\circ$	Applied static load			Yield-point strength P_k N	Mass g
	Threaded S_1 JIS Class 2	Length L	L_a	ℓ	L_1	L_2	W 0 -0.3			d_4	M_2	M_3	ℓ_1	W_1 0 -0.3			Perpendicular to the axis C_s N	Axial direction C_{sa} (Tensile) N C_{sa} (Compressive) N			
	TBS 6	M20×1.5	34.2	11.5	8	7	2	17	6	M6×1	10	12.2	15	11	8	12.7	30	13700	4900	12000	2450
TBS 8	M22×1.5	41.5	14.5	11	8.5	2	19	8	M8×1.25	12	16	17	12	10	15.875	30	24600	10400	17600	5200	50
TBS 10	M25×1.5	55.5	17	13.5	10	2	22	10	M10×1.5	14	19.5	26	21	11	19.05	30	32700	14400	25000	7250	80
TBS 12	M30×1.5	63	20	15.5	12	3	27	12	M12×1.75	19	21	30	24	17	22.225	30	44000	18300	35000	9220	130

[Material]

Holder : High strength zinc alloy (see A-926)
 Ball shank : Bearing steel ball Hardness: 650 Hv or higher
 Shank S35C Chromate treatment

[Spherical Clearance]

Perpendicular to the axis: 0.03mm or less
 Axial direction : 0.1mm or less

[Female Threading for Attaching the Outer Ring]

JIS Class 2 thread

[Yield-Point Strength]

It indicates the strength in the direction shown in the Fig.1.

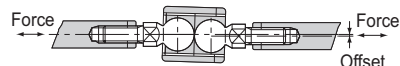
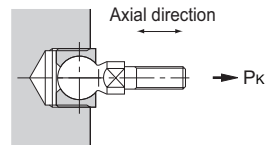


Fig.1

[Example of Installation]

As shown in the Fig.2 below, compared with the conventional installation using a frog-shaped joint, model TBS can be installed more compactly and more easily.

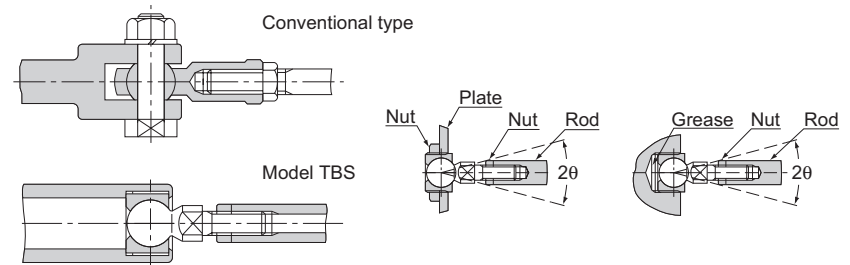


Fig.2

[Lubrication]

Since the holder has an oil pocket, it allows grease to be replenished as necessary.